

GÜHRING

德國切削刀具第一品牌

鈷領牌 高速鋼含鈷鑽頭

GU 3FS

THE DRILL WITH
3-FLATS ON SHANK

柄部3平面式 鑽夾夾持而不打滑

SHARP. 銳利

FAST. 快速

SAFE. 安全

DIY工作的好幫手

適合鋼料、白鐵、鋁、鑄鐵等金屬鑽孔

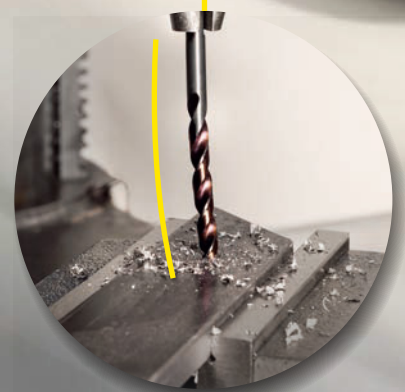
適合於手提電鑽、立式鑽床、銑床等三爪式夾頭夾持



3 flats on shank

Prevents slipping in the chuck.
For optimum torque transmission.
No spinning at the hole exit.

防止柄部打滑、
最佳的扭力傳遞、
孔鑽穿瞬間柄部不打滑。



Reduced breakage due to high elasticity

Co-alloyed high speed steel ensures long
tool life and wear resistance.

鑽頭材質為含鈷高速鋼、
具有高彈性特性而減少斷裂、
刀具壽命長且耐磨性佳。

3 FLATS, 3 ADVANTAGES: **SHARP, FAST, SAFE**

YOU WANT TO MAKE YOUR DRILLING PROCESSES MORE EFFECTIVE?

With the GU 3FS precision drill you drill fast and safely thanks to the 4-facet precision grinding and the split point geometry. With low drilling pressure you can achieve fast and uncomplicated machining progress.

您想要鑽孔過程中更有效率嗎？

借助GU 3FS精密鑽頭，您可以快速安全地進行鑽孔，精密四面研磨的鑽頭頂角幾何形狀，在低的鑽孔阻力下，可以實現快速而簡單的加工過程。

Optimal chip evacuation

thanks to round chip flute design.

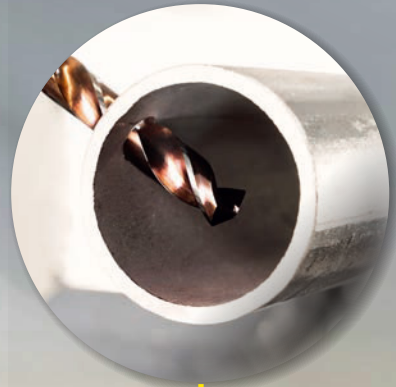
圓形切屑槽設計，排屑性優良。



4-facet precision grinding

The low drilling pressure and the excellent self-centering allow particularly dimensionally accurate holes.

鑽頂角為4面精密研磨，出色的自動定心功能，鑽孔阻力低，可加工出尺寸精確的孔。

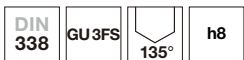


Universal application thanks to
point angle of 135°.

**135° 泛用型鑽頂角，
各種材質皆能使用**



Jobber drills

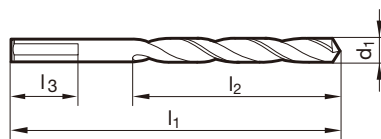


Tool material **HSC0**

Surface

Cutting direction

- P** ● $\geq \varnothing 4.00$ mm with 3-flats on shank • 3-flats on shank prevents slipping in the chuck • for use in drilling machines with 3-jaw chucks • optimally suited for hand drilling machines and pillar drill machines • 4-facet point grind with split point $\geq \varnothing 1.000$ • low feed force • fastest drilling progress
- M** ● $\geq \varnothing 4.0$ mm, 柄上有3個平面, 可以防止鑽頭在夾頭中打滑, 適用於有三爪夾的鑽床, 最適合於手提電鑽和立式鑽床, $\geq \varnothing 1.0$ mm鑽頂角精密4面磨法, 鑽孔阻力低, 鑽孔快速。
- K** ● $\geq \varnothing 4.0$ mm, 柄上有3個平面, 可以防止鑽頭在夾頭中打滑, 適用於有三爪夾的鑽床, 最適合於手提電鑽和立式鑽床, $\geq \varnothing 1.0$ mm鑽頂角精密4面磨法, 鑽孔阻力低, 鑽孔快速。
- N** ● $\geq \varnothing 4.0$ mm, 柄上有3個平面, 可以防止鑽頭在夾頭中打滑, 適用於有三爪夾的鑽床, 最適合於手提電鑽和立式鑽床, $\geq \varnothing 1.0$ mm鑽頂角精密4面磨法, 鑽孔阻力低, 鑽孔快速。
- S** ○ for universal application
- H** 用途廣泛、各種材質皆適用



Article no. **9000**

| d1 | | l1 | l2 | l3 | Code no. | 價格 |
|-------|-------|---------|--------|-------|----------|-----|
| mm | inch | mm | mm | | | |
| 1.000 | | 34.000 | 12.000 | | 1.000 | 190 |
| 1.500 | | 40.000 | 18.000 | | 1.500 | 180 |
| 1.590 | 1/16 | 43.000 | 20.000 | | 1.590 | 210 |
| 1.980 | 5/64 | 49.000 | 24.000 | | 1.980 | 210 |
| 2.000 | | 49.000 | 24.000 | | 2.000 | 160 |
| 2.380 | 3/32 | 57.000 | 30.000 | | 2.380 | 190 |
| 2.500 | | 57.000 | 30.000 | | 2.500 | 170 |
| 2.780 | 7/64 | 61.000 | 33.000 | | 2.780 | 230 |
| 3.000 | | 61.000 | 33.000 | | 3.000 | 170 |
| 3.180 | | 65.000 | 36.000 | | 3.180 | 220 |
| 3.200 | | 65.000 | 36.000 | | 3.200 | 190 |
| 3.300 | | 65.000 | 36.000 | | 3.300 | 190 |
| 3.500 | | 70.000 | 39.000 | | 3.500 | 190 |
| 3.570 | 9/64 | 70.000 | 39.000 | | 3.570 | 250 |
| 3.970 | 5/32 | 75.000 | 43.000 | | 3.970 | 230 |
| 4.000 | | 75.000 | 43.000 | 17.00 | 4.000 | 200 |
| 4.200 | | 75.000 | 43.000 | 17.00 | 4.200 | 250 |
| 4.370 | 11/64 | 80.000 | 47.000 | 17.50 | 4.370 | 300 |
| 4.500 | | 80.000 | 47.000 | 17.50 | 4.500 | 250 |
| 4.760 | 3/16 | 86.000 | 52.000 | 18.00 | 4.760 | 290 |
| 5.000 | | 86.000 | 52.000 | 18.00 | 5.000 | 250 |
| 5.100 | | 86.000 | 52.000 | 18.00 | 5.100 | 290 |
| 5.160 | 13/64 | 86.000 | 52.000 | 18.00 | 5.160 | 320 |
| 5.200 | | 86.000 | 52.000 | 18.00 | 5.200 | 290 |
| 5.500 | | 93.000 | 57.000 | 19.00 | 5.500 | 340 |
| 5.560 | 7/32 | 93.000 | 57.000 | 19.00 | 5.560 | 420 |
| 5.950 | 15/64 | 93.000 | 57.000 | 19.00 | 5.950 | 350 |
| 6.000 | | 93.000 | 57.000 | 19.00 | 6.000 | 320 |
| 6.350 | 1/4 | 101.000 | 63.000 | 20.00 | 6.350 | 380 |
| 6.500 | | 101.000 | 63.000 | 20.00 | 6.500 | 370 |
| 6.750 | 17/64 | 109.000 | 69.000 | 21.00 | 6.750 | 520 |
| 6.800 | | 109.000 | 69.000 | 21.00 | 6.800 | 450 |
| 7.000 | | 109.000 | 69.000 | 21.00 | 7.000 | 390 |
| 7.150 | | 109.000 | 69.000 | 21.00 | 7.150 | 630 |
| 7.500 | | 109.000 | 69.000 | 21.00 | 7.500 | 410 |
| 7.540 | 19/64 | 117.000 | 75.000 | 22.00 | 7.540 | 660 |

| d1 | | l1 | l2 | l3 | Code no. | 價格 |
|--------|-------|---------|---------|-------|----------|-------|
| mm | inch | mm | mm | mm | | |
| 7.940 | 5/16 | 117.000 | 75.000 | 22.00 | 7.940 | 820 |
| 8.000 | | 117.000 | 75.000 | 22.00 | 8.000 | 510 |
| 8.330 | 21/64 | 117.000 | 75.000 | 22.00 | 8.330 | 910 |
| 8.500 | | 117.000 | 75.000 | 22.00 | 8.500 | 510 |
| 8.730 | 11/32 | 125.000 | 81.000 | 23.00 | 8.730 | 1,000 |
| 9.000 | | 125.000 | 81.000 | 23.00 | 9.000 | 660 |
| 9.130 | 23/64 | 125.000 | 81.000 | 23.00 | 9.130 | 1,080 |
| 9.500 | | 125.000 | 81.000 | 23.00 | 9.500 | 770 |
| 9.530 | | 133.000 | 87.000 | 25.00 | 9.530 | 1,220 |
| 9.920 | 25/64 | 133.000 | 87.000 | 25.00 | 9.920 | 1,350 |
| 10.000 | | 133.000 | 87.000 | 25.00 | 10.000 | 740 |
| 10.200 | | 133.000 | 87.000 | 25.00 | 10.200 | 1,050 |
| 10.320 | 13/32 | 133.000 | 87.000 | 25.00 | 10.320 | 1,410 |
| 10.500 | | 133.000 | 87.000 | 25.00 | 10.500 | 1,100 |
| 10.720 | 27/64 | 142.000 | 94.000 | 27.00 | 10.720 | 1,730 |
| 11.000 | | 142.000 | 94.000 | 27.00 | 11.000 | 1,190 |
| 11.110 | 7/16 | 142.000 | 94.000 | 27.00 | 11.110 | 1,640 |
| 11.500 | | 142.000 | 94.000 | 27.00 | 11.500 | 1,540 |
| 11.510 | 29/64 | 142.000 | 94.000 | 27.00 | 11.510 | 2,010 |
| 11.910 | 15/32 | 151.000 | 101.000 | 29.00 | 11.910 | 2,070 |
| 12.000 | | 151.000 | 101.000 | 29.00 | 12.000 | 1,730 |
| 12.300 | 31/64 | 151.000 | 101.000 | 29.00 | 12.300 | 2,250 |
| 12.500 | | 151.000 | 101.000 | 29.00 | 12.500 | 2,010 |
| 12.700 | 1/2 | 151.000 | 101.000 | 29.00 | 12.700 | 2,070 |
| 13.000 | | 151.000 | 101.000 | 29.00 | 13.000 | 2,190 |



Jobber drills



Tool material **HSCO**

Surface

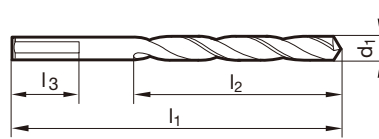
Cutting direction

SEMI-STANDARD

- P** ● ≥ Ø 4.00 mm with 3-flats on shank • 3-flats on shank prevents slipping in the chuck • for use in drilling machines with 3-jaw chucks • optimally suited for hand drilling machines and pillar drill machines • 4-facet point grind with split point ≥ Ø 1.000 • low feed force • fastest drilling progress
- M** ●
- K** ●
- N** ● ≥ Ø 4.0 mm, 柄上有3個平面, 可以防止鑽頭在夾頭中打滑, 適用於有三爪夾的鑽床, 最適合於手提電鑽和立式鑽床, ≥ Ø 1.0 mm鑽頂角精密4面磨法, 鑽孔阻力低, 鑽孔快速。
- S** ○
- H** for universal application
用途廣泛、各種材質皆適用



Ø 1,000 - 5,000: Set with 2 pieces per package.
Price is per set.
> Ø 5,000: 1 pieces per package. Price is per set.



Ø1,0 -5,0, 每個包裝為2支, 價格是一個包裝2支含包裝盒、
>Ø5,0, 每個包裝為1支, 價格是1支含包裝盒。

Article no. **9000**

| d1 | | l1 | l2 | l3 | Code no. | 價格 |
|-------|-------|---------|--------|-------|----------|-----|
| mm | inch | mm | mm | | | |
| 1.000 | | 34.000 | 12.000 | | 1.000 | 190 |
| 1.500 | | 40.000 | 18.000 | | 1.500 | 180 |
| 1.590 | 1/16 | 43.000 | 20.000 | | 1.590 | 210 |
| 1.980 | 5/64 | 49.000 | 24.000 | | 1.980 | 210 |
| 2.000 | | 49.000 | 24.000 | | 2.000 | 160 |
| 2.380 | 3/32 | 57.000 | 30.000 | | 2.380 | 190 |
| 2.500 | | 57.000 | 30.000 | | 2.500 | 170 |
| 2.780 | 7/64 | 61.000 | 33.000 | | 2.780 | 230 |
| 3.000 | | 61.000 | 33.000 | | 3.000 | 170 |
| 3.180 | | 65.000 | 36.000 | | 3.180 | 220 |
| 3.200 | | 65.000 | 36.000 | | 3.200 | 190 |
| 3.300 | | 65.000 | 36.000 | | 3.300 | 190 |
| 3.500 | | 70.000 | 39.000 | | 3.500 | 190 |
| 3.570 | 9/64 | 70.000 | 39.000 | | 3.570 | 250 |
| 3.970 | 5/32 | 75.000 | 43.000 | | 3.970 | 230 |
| 4.000 | | 75.000 | 43.000 | 17.00 | 4.000 | 200 |
| 4.200 | | 75.000 | 43.000 | 17.00 | 4.200 | 250 |
| 4.370 | 11/64 | 80.000 | 47.000 | 17.50 | 4.370 | 300 |
| 4.500 | | 80.000 | 47.000 | 17.50 | 4.500 | 250 |
| 4.760 | 3/16 | 86.000 | 52.000 | 18.00 | 4.760 | 290 |
| 5.000 | | 86.000 | 52.000 | 18.00 | 5.000 | 250 |
| 5.100 | | 86.000 | 52.000 | 18.00 | 5.100 | 290 |
| 5.160 | 13/64 | 86.000 | 52.000 | 18.00 | 5.160 | 320 |
| 5.200 | | 86.000 | 52.000 | 18.00 | 5.200 | 290 |
| 5.500 | | 93.000 | 57.000 | 19.00 | 5.500 | 340 |
| 5.560 | 7/32 | 93.000 | 57.000 | 19.00 | 5.560 | 420 |
| 5.950 | 15/64 | 93.000 | 57.000 | 19.00 | 5.950 | 350 |
| 6.000 | | 93.000 | 57.000 | 19.00 | 6.000 | 320 |
| 6.350 | 1/4 | 101.000 | 63.000 | 20.00 | 6.350 | 380 |
| 6.500 | | 101.000 | 63.000 | 20.00 | 6.500 | 370 |
| 6.750 | 17/64 | 109.000 | 69.000 | 21.00 | 6.750 | 520 |
| 6.800 | | 109.000 | 69.000 | 21.00 | 6.800 | 450 |
| 7.000 | | 109.000 | 69.000 | 21.00 | 7.000 | 390 |
| 7.150 | | 109.000 | 69.000 | 21.00 | 7.150 | 630 |
| 7.500 | | 109.000 | 69.000 | 21.00 | 7.500 | 410 |
| 7.540 | 19/64 | 117.000 | 75.000 | 22.00 | 7.540 | 660 |

| d1 | | l1 | l2 | l3 | Code no. | 價格 |
|--------|-------|---------|---------|-------|----------|-------|
| mm | inch | mm | mm | mm | | |
| 7.940 | 5/16 | 117.000 | 75.000 | 22.00 | 7.940 | 820 |
| 8.000 | | 117.000 | 75.000 | 22.00 | 8.000 | 510 |
| 8.330 | 21/64 | 117.000 | 75.000 | 22.00 | 8.330 | 910 |
| 8.500 | | 117.000 | 75.000 | 22.00 | 8.500 | 510 |
| 8.730 | 11/32 | 125.000 | 81.000 | 23.00 | 8.730 | 1,000 |
| 9.000 | | 125.000 | 81.000 | 23.00 | 9.000 | 660 |
| 9.130 | 23/64 | 125.000 | 81.000 | 23.00 | 9.130 | 1,080 |
| 9.500 | | 125.000 | 81.000 | 23.00 | 9.500 | 770 |
| 9.530 | | 133.000 | 87.000 | 25.00 | 9.530 | 1,220 |
| 9.920 | 25/64 | 133.000 | 87.000 | 25.00 | 9.920 | 1,350 |
| 10.000 | | 133.000 | 87.000 | 25.00 | 10.000 | 740 |
| 10.200 | | 133.000 | 87.000 | 25.00 | 10.200 | 1,050 |
| 10.320 | 13/32 | 133.000 | 87.000 | 25.00 | 10.320 | 1,410 |
| 10.500 | | 133.000 | 87.000 | 25.00 | 10.500 | 1,100 |
| 10.720 | 27/64 | 142.000 | 94.000 | 27.00 | 10.720 | 1,730 |
| 11.000 | | 142.000 | 94.000 | 27.00 | 11.000 | 1,190 |
| 11.110 | 7/16 | 142.000 | 94.000 | 27.00 | 11.110 | 1,640 |
| 11.500 | | 142.000 | 94.000 | 27.00 | 11.500 | 1,540 |
| 11.510 | 29/64 | 142.000 | 94.000 | 27.00 | 11.510 | 2,010 |
| 11.910 | 15/32 | 151.000 | 101.000 | 29.00 | 11.910 | 2,070 |
| 12.000 | | 151.000 | 101.000 | 29.00 | 12.000 | 1,730 |
| 12.300 | 31/64 | 151.000 | 101.000 | 29.00 | 12.300 | 2,250 |
| 12.500 | | 151.000 | 101.000 | 29.00 | 12.500 | 2,010 |
| 12.700 | 1/2 | 151.000 | 101.000 | 29.00 | 12.700 | 2,070 |
| 13.000 | | 151.000 | 101.000 | 29.00 | 13.000 | 2,190 |



Twist drill sets



Tool material HSC0
Surface
Cutting direction

- P** ● $\geq \varnothing 4.00$ mm with 3-flats on shank • 3-flats on shank prevents slipping in the chuck • for use in drilling machines with 3-jaw chucks • optimally suited for hand drilling machines and pillar drill machines • 4-facet point grind with split point $\geq \varnothing 1.000$ • low feed force • fastest drilling progress
- M** ● $\geq \varnothing 4.0$ mm, 柄上有3個平面, 可以防止鑽頭在夾頭中打滑, 適用於有三爪夾的鑽床,
- K** ● 最適合於手提電鑽和立式鑽床, $\geq \varnothing 1.0$ mm鑽頂角精密4面磨法, 鑽孔阻力低, 鑽孔快速。
- N** ●
- S** ○ for universal application
- H** 用途廣泛、各種材質皆適用



Article no. 9001

| d1 | increasing by | Pieces/set | Code no. | 價格 |
|----------|---------------|------------|----------|--------|
| mm | mm | | | |
| 1.0-10.0 | 0.5 | 19 | 0.013 | 7,000 |
| 1.0-13.0 | 0.5 | 25 | 0.014 | 16,800 |

SpyroTec

螺旋凸型刃口倒角刀、除毛邊刀

THE TWISTED HSS-/HSCO COUNTERSINK WITH 3-FLATS ON SHANK
柄部有3平面、便於鑽夾夾持



FOR FURTHER INFORMATION
PLEASE CONTACT US!

需要更多資訊 請與我們聯絡



THE ALL-ROUNDER FOR YOUR DRILLING PROCESSES: SHARP, FAST, SAFE.



GÜHRING

台灣鈷領股份有限公司

桃園總公司：(32846)桃園市觀音區忠愛路2段200號

中部辦事處：(40764)台中市西屯區台灣大道四段936號10F之3

南部辦事處：(82054)高雄市岡山區大仁南路140號

Website: <http://www.guhring.com.tw>

Tel : +886-3-498-7530 Fax : +886-3-498-7331

Tel : +886-4-2463-3788 Fax : +886-4-2463-0793

Tel : +886-7-622-4855 Fax : +886-7-622-4123

E-mail : info@guhring.com.tw